

FontView

Version 1.32

September 16, 1992

This document was originally formatted in Times.

FontView is distributed on a shareware basis. This version may be freely distributed on bulletin boards and by user groups. Please contact me for any other distribution arrangements.

If you use this desk accessory, please send \$8 (\$10 international) to:

Simon Brown
2190 - 15th Street
San Francisco, CA 94114

You can also use the CompuServe shareware database to make the payment (FontView's ID is #140), but I prefer a check, as Compuserve charges 15% for handling.

In return, I will send you the latest version, which also has some extras, such as a FKEY for more convenient access to FontView, access to the **Kerning Info...** and **Print Window...** menu items, and with the **Download Name** field enabled. Naturally, this also helps me recoup some of the costs of developing FontView.

System Requirements

FontView is a desk accessory that works on any Mac with System 4.1 or greater, and is completely compatible with System 7.1

Installing FontView

System 6 or lower:

copy the DA from the suitcase file to your System file with Font/DA Mover

System 7:

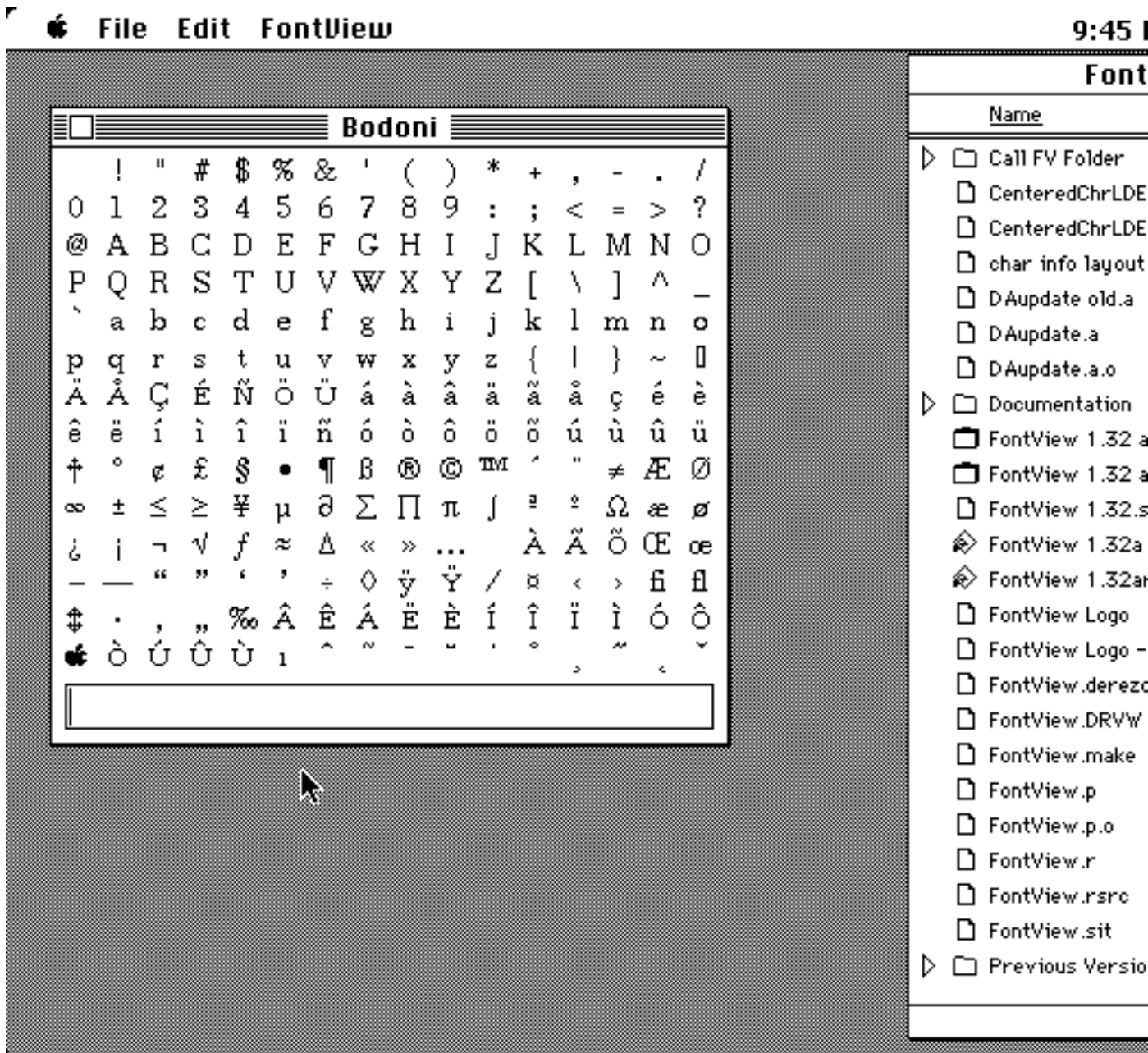
drop the FontView icon onto the System Folder icon OR
use Font/DA Mover

USING FONTVIEW

Once FontView is installed, using it is a simple matter. Hopefully you will find FontView useful as well as self-explanatory. But there are a few things that are less obvious or need further explanation. Below is a brief description of FontView's operation and features.

Opening FontView

When the installation of FontView is completed, FontView can usually be opened by accessing the apple menu located on the menu bar. After selecting it from the menu, FontView will add its own menu to the menu bar and open a window displaying the last used font.



screen shot showing the FontView window

If the window is too large for the screen, you may want to use the **Size** menu item in the **FontView** menu to select a smaller font size. The FontView window will then be resized for the new font size.

Character Display Area

The entire font for the selected typeface is displayed in this area of the window, with the exception of the control characters (although even these can be displayed - see **Preferences Dialog** below). By clicking on a character with the mouse, it will then be highlighted and “typed” into the text edit area. By double-clicking on a character you can get its specifications as displayed by the **Character Info** dialog.

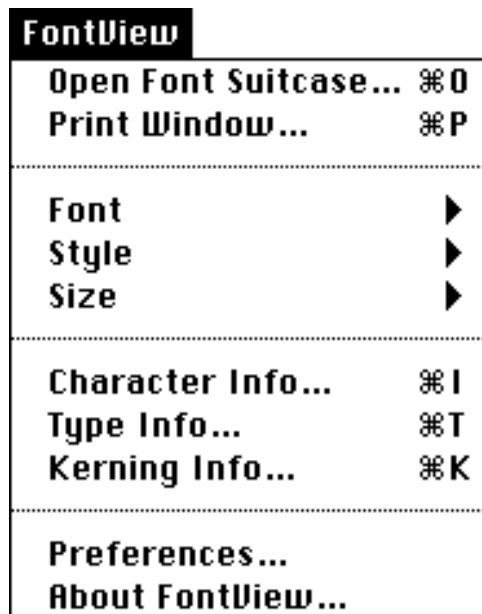
Text Edit Area

At the bottom of the FontView window is the text editing area. Any characters typed, clicked, or double-clicked are displayed here. You can use this area to select characters that you want to cut and paste into another program.

To make cut-and-pasting easier, there is a short-cut. Just **shift-double-click** on a character in FontView's window. The character will then be selected and copied into the clipboard. Unfortunately, this feature does not work with MultiFinder under System 6.

FontView Menu

As soon as FontView is opened or re-activated, it will add the FontView menu to the right side of the menu bar.



FontView's Menu

The use of the **Font**, **Size** and **Style** menu items is fairly obvious. They will all affect the appearance of the characters in FontView's window, and the results returned from many of its dialogs. For those with

small screens, the **Size** menu item has an added significance, as mentioned above in the FontView Menu section. **If the window is too large to fit on your screen, select a smaller point size.**

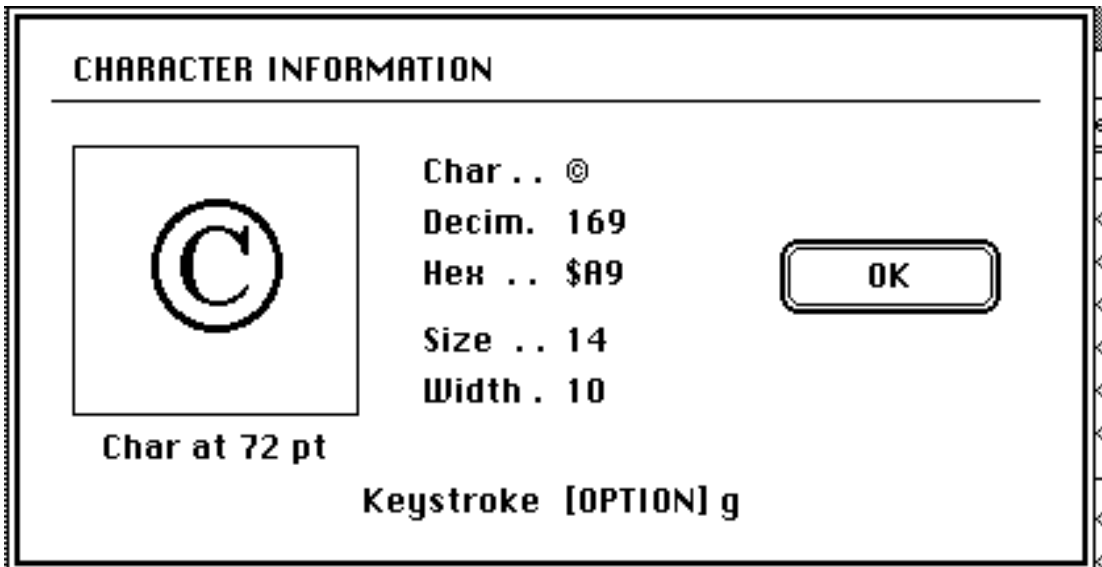
FontView Menu (cont.)

The other menu items are:

Open Font Suitcase	view the fonts installed in a font suitcase
<i>or</i>	
Close Font Suitcase	close open suitcase and use the fonts in the System file
Print Window	print the font and its specs. (registered version only)
Character Info	show enlarged view of last selected char, show char specs.
Type Info	font name(s), type of font, ascent, descent, etc.
Kerning Info	kerning values for the current font (registered version only)
Preferences	toggle display of control characters, clipboard format, etc.
About FontView	displays current version, help screen

Getting Character Information

To get the specifications for a selected character, double-click on one of the characters in the window, or select **Character Info...** from the **FontView** menu.

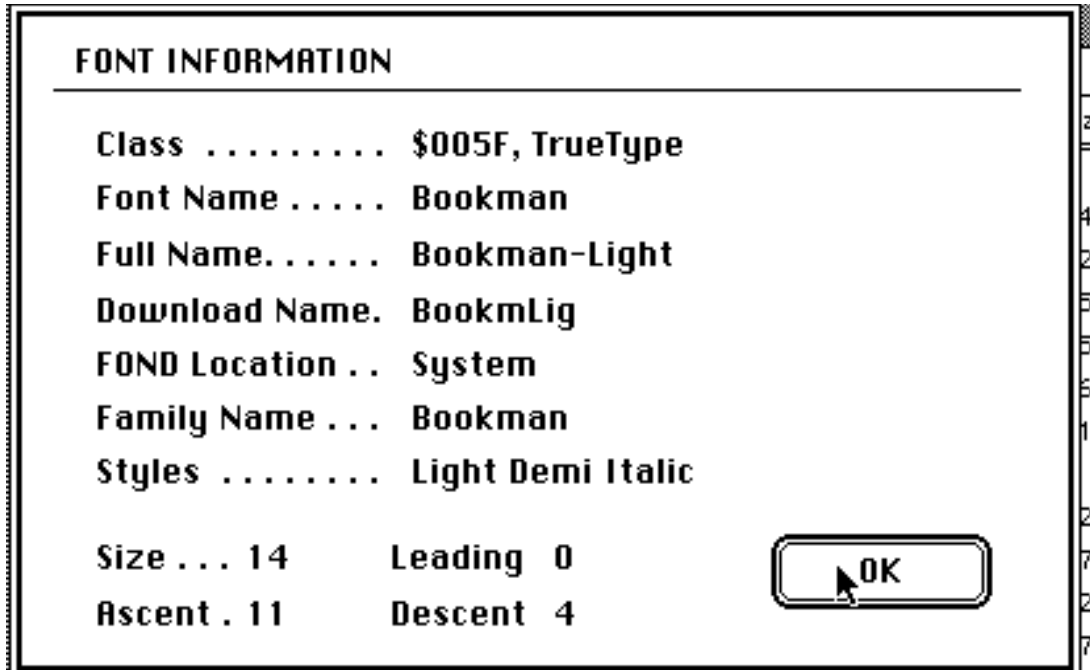


Character Info Dialog

Doing this will give you a view of the character at 72 points (or 36 pts if its too large at 72), the ASCII number in decimal and hexadecimal, the width of the character, and the keystroke needed to type the character from the keyboard. In the **Char** field, the character is also displayed as it looks in the system font (usually 12 point Chicago).

Type Specifications

If you would like to know more about the current typeface, the **Type Info...** dialog can hopefully provide you with the needed information.



Type Info Dialog (for full version)

The **Font Name**, **Full Name**, and **Family Name** fields may sometimes look the same or very similar, depending on the typeface. However, as you can see with the above example, this isn't always the case.

- | | |
|----------------------|---|
| Font Name | The name as it appears in the font menu, and is the same as the resource name used by the operating system. |
| Full Name | This is the full, unabbreviated name as given to it by the font's manufacturer. Some programs, such as Adobe Illustrator, may use this name in an alternate form of the font menu. |
| Family Name | The root name of the font. The style name(s) are then appended to the root to give the full name for the font. |
| Download Name | The name of the file containing the postscript code to draw the font. The file is downloaded to the printer when printing to a postscript device, or by ATM (Adobe Type Manager) to draw on the screen when the appropriate screen bitmap is unavailable. The postscript font files are placed in the System Folder, or the Extensions folder inside the System Folder. FontView will look for them in these two places, and if it finds the file it will display Present just to the right of the name. Many fonts don't have this file - TrueType fonts, for instance, don't use this feature. |

Type Specifications (cont.)

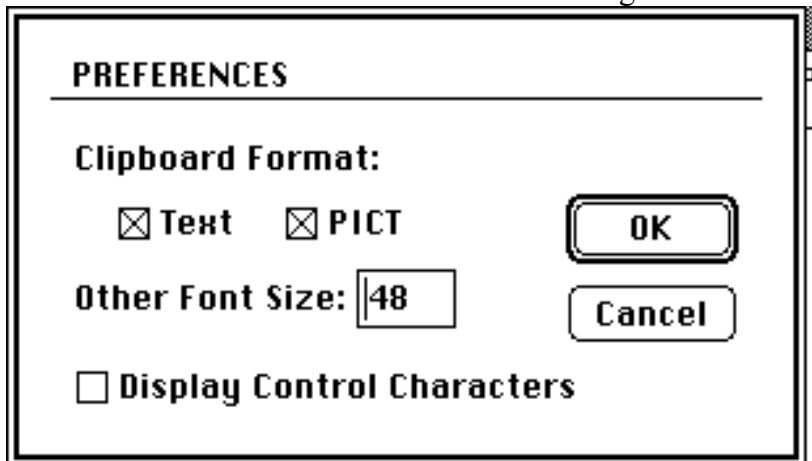
The Class field returns information on the type of font currently selected. It will display one or more of the following messages:

True Type	By checking for the presence of the 'sfnt' resource, FontView can determine if the current font was installed as a TrueType font.
NFNT	The font contains a 'NFNT' resource. This allows for a greater number of font id's then fonts containing only 'FONT' resources.
Bitmap Only	This font has a bitmap only, and will print at the screen resolution. Some fonts, such as Geneva, will print on postscript devices at the full printer resolution by using one of the resident postscript fonts instead. The avail-ability of TrueType version for these fonts has made this feature nearly obsolete.
\$XXXX	<p>where XXXX is a hexadecimal code. This is the value from the Font Class field in the style mapping table from the font's FOND resource. It is a series of 11 packed boolean flags.</p> <ul style="list-style-type: none"> Bit 0 - Font name needs coordinating Bit 1 - Macintosh vector reencoding scheme is required Bit 2 - Font has outline property by changing PaintType to 2 Bit 3 - Disallows outline simulation by smear and whiteout Bit 4 - Disallows emboldening by smear technique Bit 5 - Emboldening is simulated by increasing point size Bit 6 - Disallows obliquing for italic style Bit 7 - Disallows automatic simulation of condensed style Bit 8 - Disallows automatic simulation of expanded style Bit 9 - Font requires reencoding other than Macintosh vector encoding Bit 10 - No additional intercharacter spacing other than the space char. for this font family <p>See the LaserWriter Reference Manual for further details on meaning of these flags.</p>

Another field is called **Styles**. This will contain the postscript styles (if any) that were included in the style mapping table for the selected font family. These are different from the usual meaning of styles on the Mac, where a font style is be derived (mathematically converted) into the selected style. An exception to this would be Helvetica Narrow, which is listed as one of the styles for Hevetica, but is actually a derived font. Postscript styled fonts are typically designed by the type foundry for use as is, without the need of on-the-fly modification of the weight or obliqueness.

Preferences Dialog

A few of FontView's features are customizable, and are set from the **Preferences** dialog.



Preferences Dialog

The clipboard format determines how characters will be saved on the clipboard. It may be convenient to have the PICT option toggled on for pasting characters into another program, where they can be stretched or otherwise resized. If you are using MacDraw, you will also be able to edit the pasted text with the original font, style, and size intact.

Preferences Dialog (cont.)

The **Other Font Size** is the value used for the alternate size in the font size menu. **Display Control Characters** toggles the display of control characters in FontView's window. For most fonts, there are no symbols printed with these characters, so you would typically leave it off.

Opening Font Suitcases

This feature allows you to view fonts that are not currently installed in your System file. This feature is controlled through the **Open Suitcase...** and **Close Suitcase** menu item in the **FontView** menu. Note that having a suitcase open may affect the appearance of a font being displayed by an application running at the same time, under the following conditions:

- You are **not** using MultiFinder or System 7
- The font in the suitcase is the same as the one the application is using
- The version of the font in the System file is different than the one in the suitcase, ie. TrueType vs. Adobe Type 1, differences in bitmaps, and differences in spacing.

This occurs because the System will look first in the open suitcase for a font's bitmap, spacing, or TrueType information. MultiFinder and System 7 search only the System file, so the problem does not occur with these systems.

Questions or Comments

If you have any questions or comments leave me a message at:

Compuserve: ID# 74017,250
America Online: SiBrown

Simon Brown
2190 15th Street
San Francisco, CA 94114